

NOM 11

Oil mist filter



Designed for lathing and milling applications, for machines stamping and pressing steel plates, industrial washing machines, abrasive water jets etc. In all metal fabrication with oil mist troubles, these filters will fit into a ducting system, connected to each machine. All units are equipped with pres-sure gauge for control of filters as well as a indication for need of cleaning (self draining). Suitable for emulsions and neat oil.

- Low maintenance cost
- Self draining mist filter
- Easy to install
- Superior filtration efficiency
- Made to take up very little space.

Product name	NOM 11
Noise level (dB(A))	66,4
Protection class	IP 55
Filter efficiency (%)	97,5
Compressed air requirement	No
Compressed air consumption	No
Installation	[Indoor]
Material	Housing made in powder coated sheet metal.
Suitable for combustible dust	False
Material recycling (%)	86
Filter Area (m2)	8.5
Capacity (max airflow m3/h)	1100
Operating Temperature	5 - 60 deg
Frequency (Hz)	50
Filter type	[cartridge]
Number of filter elements	1
Filter material	Glassfibre
Power (kW)	0,75



NOM 11







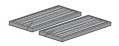
Description	Power Voltage (V)	No of phases	Amperage (A)	Weight (kg)	Note	Model
NOM 11	230	1	5,7	137		12621768
NOM 11, HEPA	400/230	3	2,9/1,7	37	Includes HEPA filter with 16 sqm filterarea and with 99,97 % efficiency.	12622268*
NOM 11, HEPA				37	Delivered without Fan. Includes HEPA filter with 16,5 sqm filterarea and with 99,97 % efficiency.	12622668**
NOM 11,				37	Delivered without Fan.	12622568***
NOM 11, HEPA	230	1	5,7	37	Includes HEPA filter with 16 sqm filterarea and with 99,97 % efficiency.	12621868*
NOM 11	400/230	3	2,9/1,7	37		12622168

*Includes HEPA filter with 16 sqm filterarea and with 99,97 % efficiency.

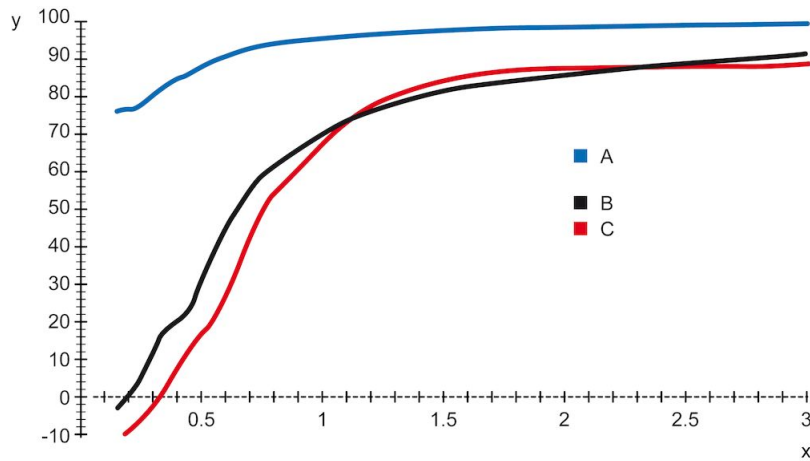
**Delivered without Fan. Includes HEPA filter with 16,5 sqm filterarea and with 99,97 % efficiency.

***Delivered without Fan.

NOM 11

Accessory		Part No
	FMS 1,6 - 2,5	14502237
	Silencer NOM 11	12373649
	Container NOM 11, 18, 28	12373651
	Hose with oil trap NOM	12373652
	Prefilter 8,5m2 NOM 11	12373654
	HEPA 16m2 NOM 11	12373646
	Coarse pre-filter	12376294

NOM 11



Y = Efficiency (%), X = Particle size (μm)

A = NOM filter, B = Centrifugal filter A, C = Centrifugal filter B

Efficiency of NOM main filter compared to typical centrifugal filters, tested with DOP.

